

## Peran STB Classic (4 mm)



### Description

Peran STB Classic is a hard wearing, decorative resin floor topping made up of colour stable quartz granules encapsulated in a clear resin binder. Peran STB Classic is a hand trowelled system with a matt finish.

### Uses

Ideal for use in public and dry process areas where the floor is subject to heavy traffic, impact and chemical spills.

### Benefits:

- Decorative floor finish
- High scratch resistance
- Easy to clean and maintain
- Excellent wear and impact resistance
- Seamless, hygienic finish
- Abrasion resistant
- High chemical resistance

### Standard colour charts

#### Commercial range



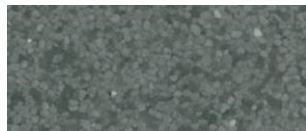
Biscuit 102



Light Grey 701



Beige 101



Mid Grey 702



Grass Green 601



Dark Grey 703



Mid Blue 501

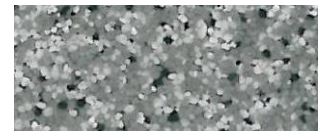


Black 901

#### Industrial range



Red 301



Grey 704



Green 602



Cream 103



Blue 502



Yellow 104

The applied colours may differ slightly from the examples shown above. Contact our customer services for a true colour sample or a special colour match. Special corporate colours and designs can be produced to order (restrictions apply).

## Model Specification

Product: Peran STB Classic

Finish: Matt

Thickness: \_\_\_\_\_mm

Colour: \_\_\_\_\_

Preparatory work and application in accordance with suppliers instructions.

Supplier: Flowcrete UK Ltd

Telephone: Customer Service +44 (0) 1270 753000

## Substrate Requirements

Concrete or screed substrate should be a minimum of 25N/mm<sup>2</sup>, free from laitance, dust and other contamination. The substrate should be dry to 75% RH as per BS 8204 and free from rising damp and ground water pressure. If no damp proof membrane is present Hydraseal DPM can be incorporated directly beneath the Peran STB system.

## Products Included in this System

### Classic (for 4 mm)

Primer:	Peran STC	@ 0.25 kg/m <sup>2</sup>
Scatter:	Coloured Quartz Size 7/8	@ 0.50 kg/m <sup>2</sup>
Topping:	Peran STC (as binder) mixed with Coloured Quartz Size 7/8	@ 0.80 kg/m <sup>2</sup> @ 6.60 kg/m <sup>2</sup>
Sealer:	Peran TCW (in one or two coats)	@ 0.80 kg/m <sup>2</sup>
and	Flowseal PU Matt	@ 0.08 kg/m <sup>2</sup>

Detailed application instructions are available upon request.

## Installation Service

The installation should be carried out by a Flowcrete approved contractor with a documented quality assurance scheme. Obtain details of our approved contractors by contacting our customer service team or enquiring via our web site. [www.flowcrete.co.uk](http://www.flowcrete.co.uk)

## Environmental considerations

The finished system is assessed as non-hazardous to health and the environment. The long service life and seamless surface reduce the need for repairs, maintenance and cleaning. Environmental and health considerations are controlled during manufacture and application of the products by Flowcrete staff and fully trained and experienced contractors.

## Focus on the Floorzone

Flowcrete are market leaders in specialist industrial and commercial flooring. Systems available include: underfloor heating systems, floor screeds, surface damp proof membranes, decorative floor finishes, seamless terrazzo, car park deck waterproofing, tank lining systems... to name just a few.

Our objective is to satisfy your Floorzone needs.

## Technical Information

The figures that follow are typical properties achieved in laboratory tests at 20 °C and at 50% Relative Humidity.

<b>CE</b>		
08		
EN 13813 RWA1-B3.0-IR15.0 Synthetic screed material for use internally in buildings		
Reaction to fire	C <sub>fi</sub> - s1	(EN 13501-1)
Impact Resistance	IR15.0	(EN ISO 6272)
Wear Resistance	RWA1	(EN 13892-5)
Bond Strength	B3.0	(EN 13892-8)

**Slip Resistance** Dry >40 low slip potential  
Method described in BS 7976-2 (in accordance with HSE and UKSRG typical values for 4-S rubber slider) guidelines)

The slipperiness of flooring materials can change significantly, due to the installation process, after short periods of use, due to inappropriate maintenance, longer-term wear and/or surface contaminants (wet or dry).

Textured systems are recommended to meet slip resistance value requirements for wet conditions and/or surface contaminants (wet or dry) - please contact our Technical Advisors for further details and specifications.

Temperature Resistance	Tolerant of sustained temperatures up to 50 °C
Water Permeability	Nil - Karsten test. (impermeable)
Vapour Permeability	ASTM E96:90 1.36g /m <sup>2</sup> /mm/24hrs
Chemical Resistance	Contact Technical Department Good resistance to tea, coffee, cola, fruit juice, soaps and bleach
Compressive Strength	>40 N/mm <sup>2</sup> (BS 6319)
Flexural Strength	15 N/mm <sup>2</sup> (BS 6319)
Tensile Strength	10 N/mm <sup>2</sup> (BS 6319)
Bond Strength	Greater than cohesive strength of 25 N/mm <sup>2</sup> concrete. > 1.5 MPa.

Complies with FeRFA category 6.

## Speed of Cure

	10 °C	20 °C	30 °C
Light traffic	36 hrs	24 hrs	16 hrs
Full traffic	72 hrs	48 hrs	48 hrs
Full chemical cure	12 days	7 days	7 days

## Aftercare - Cleaning and Maintenance

Clean regularly using a single or double headed rotary scrubber drier in conjunction with a mildly alkaline detergent.

## Important Note

Flowcrete's products are guaranteed against defective materials and manufacture and are sold subject to its standard Terms and Conditions of Sale, copies of which can be obtained on request.

## Further Information

To ensure you are specifying a fit for purpose flooring system for your project please consult our Technical Advisors on the number below or visit our website to register your interest in specifying one of the most durable floors on the market.