

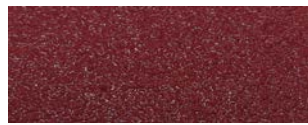
Deckshield ID Rapide



Standard Colour Chart



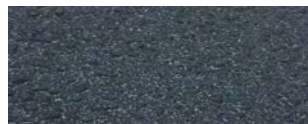
Forest Green



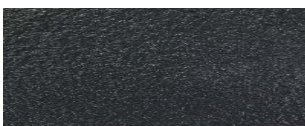
Tile Red



Goosewing Grey



Mid Grey



Dark Grey



Black

The applied colours may differ slightly from the examples shown above. Contact our customer services for a true colour sample or a special colour match.

Description

Deckshield ID Rapide is a methyl methacrylate car park deck coating system providing a colourful watertight, hard wearing surface for intermediate decks of multi-storey, basement and other trafficable suspended floors. Deckshield ID Rapide has been developed to enable very fast track applications, therefore dramatically reducing program time.

Uses

To cosmetically enhance, reduce noise, and make multi-storey car parks and suspended floors brighter, safer environments to visit. Deckshield is suitable for refurbishment of existing car parks and new construction projects.

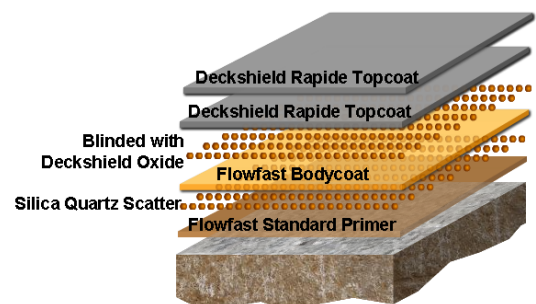
Benefits

- Fast curing and rapid installation
- Aesthetically attractive – brightens up dull, dark, musty car parks
- Reduces noise
- Hard wearing
- Abrasion resistant
- Can be used over existing asphalt substrates
- Fire resistant
- Slip resistant
- Excellent bond strength

Project References

Local references available upon request

System Design



Model Specification

Product: Deckshield ID Rapide system

Finish: Gloss

Colour: _____

Preparatory work and application in accordance with manufacturer's instructions.

Manufacturer: Flowcrete Australia Pty Ltd

Telephone: Customer Service - +61 7 3205 7115

Substrate Requirements

Concrete or screed substrate should be a minimum of 25 N/mm², free from laitance, dust and other contamination. Substrate should be surface dry to 95% RH as per BS 8204.

Products Included in this System

Flowfast Standard Primer

Silica Quartz

Flowfast Bodycoat: Flowfast Flexible Binder mixed with Flowfast SNL Filler

Deckshield Oxide

Deckshield Rapide Topcoat

Note: Alternative specifications are available for steep ramps and ramps with severe camber (please consult Flowcrete for further advice).

Detailed application instructions are available upon request.

Installation Service

The installation should be carried out by a Flowcrete approved applicator with a documented quality assurance scheme. Obtain details of our approved contractors by contacting our customer service team or enquiring via our web site at www.flowcreteaustralia.com.au.

Environmental Considerations

The finished system is assessed as non-hazardous to health and the environment. The long service life and seamless surface reduce the need for repairs, maintenance and cleaning. Environmental and health considerations are controlled during manufacture and application of the products by Flowcrete staff and fully trained and experienced contractors.

Focus on the Floorzone

Flowcrete Australia Pty Ltd is a division of the Flowcrete Group, world leaders in specialist industrial and commercial flooring. Systems available include: underfloor heating systems, floor screeds, surface damp proof membranes, decorative floor finishes, seamless terrazzo, car park deck waterproofing and corrosion protection systems... to name just a few. Our corporate objective is to satisfy your flooring needs.

Technical Information

The figures that follow are typical properties achieved in laboratory tests at 20 °C and at 50% Relative Humidity.

Fire Resistance	BS 476-3: Designated EXT.F.AA
Temperature Resistance	Softens over 70 °C, hardens on cooling
Water Permeability	Nil – Karsten test (Impermeable)
Chemical Resistance	Contact Technical Department Resistant to petrol, diesel, antifreeze, hydraulic fluid, chlorides and battery acids.
Resistance to chloride ions	DOT BD47/94: Appendix B, Method B4,2(d). Result: No chloride ion penetration after 28 days
Bond Strength	Greater than cohesive strength of 25 N/mm ² concrete. >1.5 MPa.

Speed of Cure (per layer)

Full traffic	1 hour
Full chemical cure	1 hour

Aftercare - Cleaning and Maintenance

Clean regularly using a single or double headed rotary scrubber drier in conjunction with a mildly alkaline detergent (without solvents).

Important Note

Flowcrete's products are guaranteed against defective materials and manufacture and are sold subject to its standard Terms and Conditions of Sale, copies of which can be obtained on request.

Further Information

To ensure you are specifying a fit for purpose flooring for your project please consult our Technical Advisors on the number below or visit our website to register your interest in specifying one of the most durable floors on the market.

Flowcrete Australia Pty Ltd
Brisbane Office (Regional)
PO Box 817
Nundah QLD 4012
Tel: +61 7 3205 7115
Fax: +61 7 3205 3116
Email: australia@flowcrete.com
Flowcrete Australia is an RPM company

Sydney Office
Unit 4/24 Anzac Avenue
Smeaton Grange NSW 2567
Tel: +61 2 4648 0397
Fax: +61 2 4648 0719